

# INSTRUCTION MANUAL

## BOX CAMERA

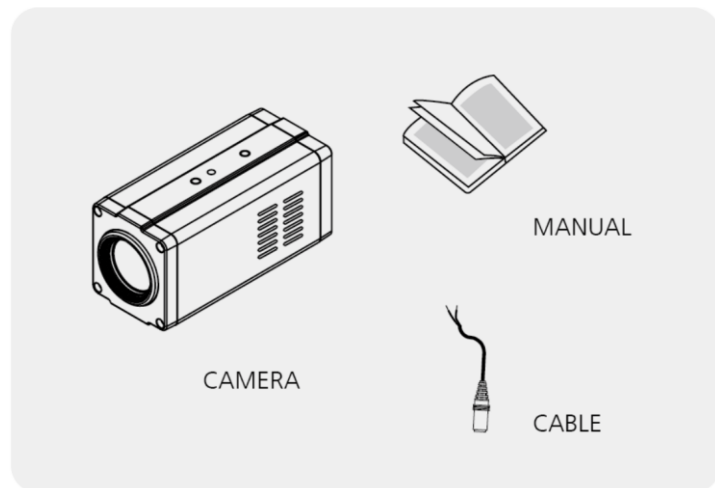
Please read this instruction manual before installing the camera and keep it for future reference.

# PRECAUTIONS

- **Avoid prolonged use in high temperature and high humidity environment**  
Use the product within the operating range specified in the specifications.  
Avoid locations where heat is generated, and Install in a well-ventilated place.
- **Do not install the camera in an unstable place**  
Confirm that the camera is firmly fixed after installation.  
Dropping the product due to poor installation may cause injury.
- **Install the camera away from dusty places**  
This may cause product malfunction, poor image quality, fire or electric shock.
- **Do not install the camera under unstable lightings**  
It is possible to output an inappropriate image due to severe illumination change or lighting flickering.
- **Do not install the camera near gas or oil leaks**  
Use in a place with flammable materials may cause fire.  
Also, keep distance from power line cables or use separate metal piping.
- **Do not disassemble the camera or insert foreign objects**  
There is no warranty liability for products that user disassembled.
- **Do not drop the camera or shock it**  
It may cause malfunction.
- **Never keep the camera directly face to strong light.**  
Exposure to strong light such as sunlight may cause light spreading or light blurring. In addition, direct sunlight can damage the image sensor.
- **Prepare for malfunction due to natural disasters**  
The grounding work or the installation of the surge protector can minimize damage to the product due to lightning, etc.
- **Be sure to check the specifications of the power supply**  
Before connecting the power to the product, make sure that the power supply meets the recommended specifications.

# PRODUCT CONTENTS & OPTION

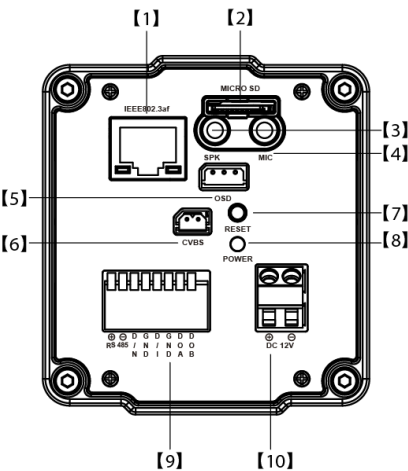
## PRODUCT CONTENTS



## REMOTE CONTROLLER (OPTION)



PART NAMES AND FUCNTIONS



No.	Part Name	Function
1	RJ45	Ethernet Port (Support PoE IEEE802.3af)
2	MICRO SD	SD Card Slot
3	SPK	Speaker Jack
4	MIC	Mic Jack
5	OSD	On-Screen Display Remote Controller Terminal
6	CVBS	Analog Video Signal Terminal
7	RESET	Reset Button
8	POWER	Power LED Indicator
9	Exterior I/O	1. RS485 + (ID 1 / Pelco-D / 2400bps) 2. RS485 - 3. D/N Day & Night Sensor Input (LOW : Night, HIGH : Day) 4. GND Ground Input 5. D/I Alarm Signal Input 6. GND Ground Input 7. DOA Alarm Signal Output A 8. DOB Alarm Signal Output B
10	DC 12V	Power Terminal

## CONNECTIONS

### Basic connection

The peripheral devices (DVR, Monitor, Lens, Power Adapter, Cable, Etc.) are not included.

#### 1. Connect a Monitor

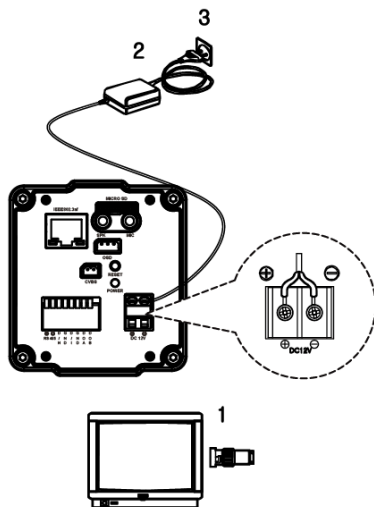
Connect the camera either into a monitor or DVR/NVR to output the video.

#### 2. Connect a DC 12V Power Adapter

Connect the DC 12V power adapter into DC 12V input terminal located back of the camera or use 802.3af PoE power.

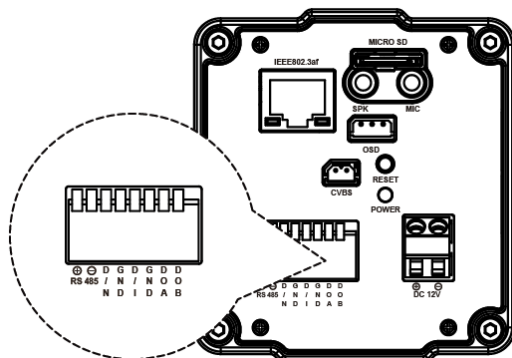
#### 3. Insert the DC 12V Power Plug into Power Outlet.

The power indicator will turn on. Adjust the brightness and contrast of the monitor for better image quality.



Connect the video output source (BNC or LAN) to the monitor, PC or DVR/NVR.

## EXTERNAL DEVICE CONNECTIONS



### RS-485 Communication

Control the output signal of Pan & Tilt driver.

### Day & Night Input

Switch between day & night mode using signals from external device.

\*Admin > Video & Audio> Camera Setup > External IR > External IR Sync Mode > Set to ALS Sync

### Alarm Input

Generate the event by detecting the connected signal of open/close from D/I terminal and GND terminal.

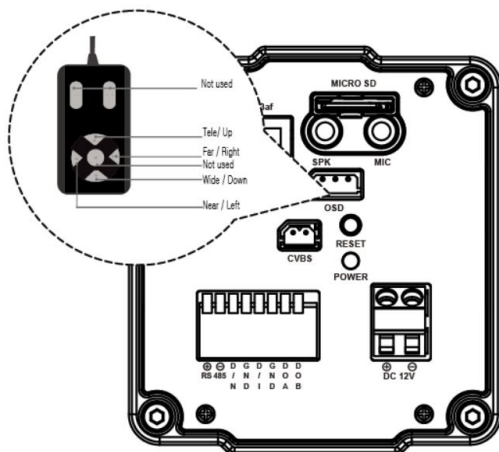
### Alarm Output

Alarm output can be controlled via web viewer and a function allows the DOA/DOB output terminal to be OPEN/CLOSE during control.

Note : Use a safety power device (relay unit) in case of voltage or current exceeds the limit.

# MENU OPERATION

Adjust the zoom/focus by connecting the remote controller on the OSD terminal located back of the camera.



Tele(Up) : Tele, Zoom In

Wide(Down) : Wide, Zoom Out

Far(Right) button : Manually adjusting the focus

\*Admin > Video & Audio > Camera Setup > Focus Mode > Set to Manual

Near(Left) button : Manually adjusting the focus

\*Admin > Video & Audio > Camera Setup > Focus Mode > Set to Manual

P/N :  
PRINTED IN KOREA

Distributed by